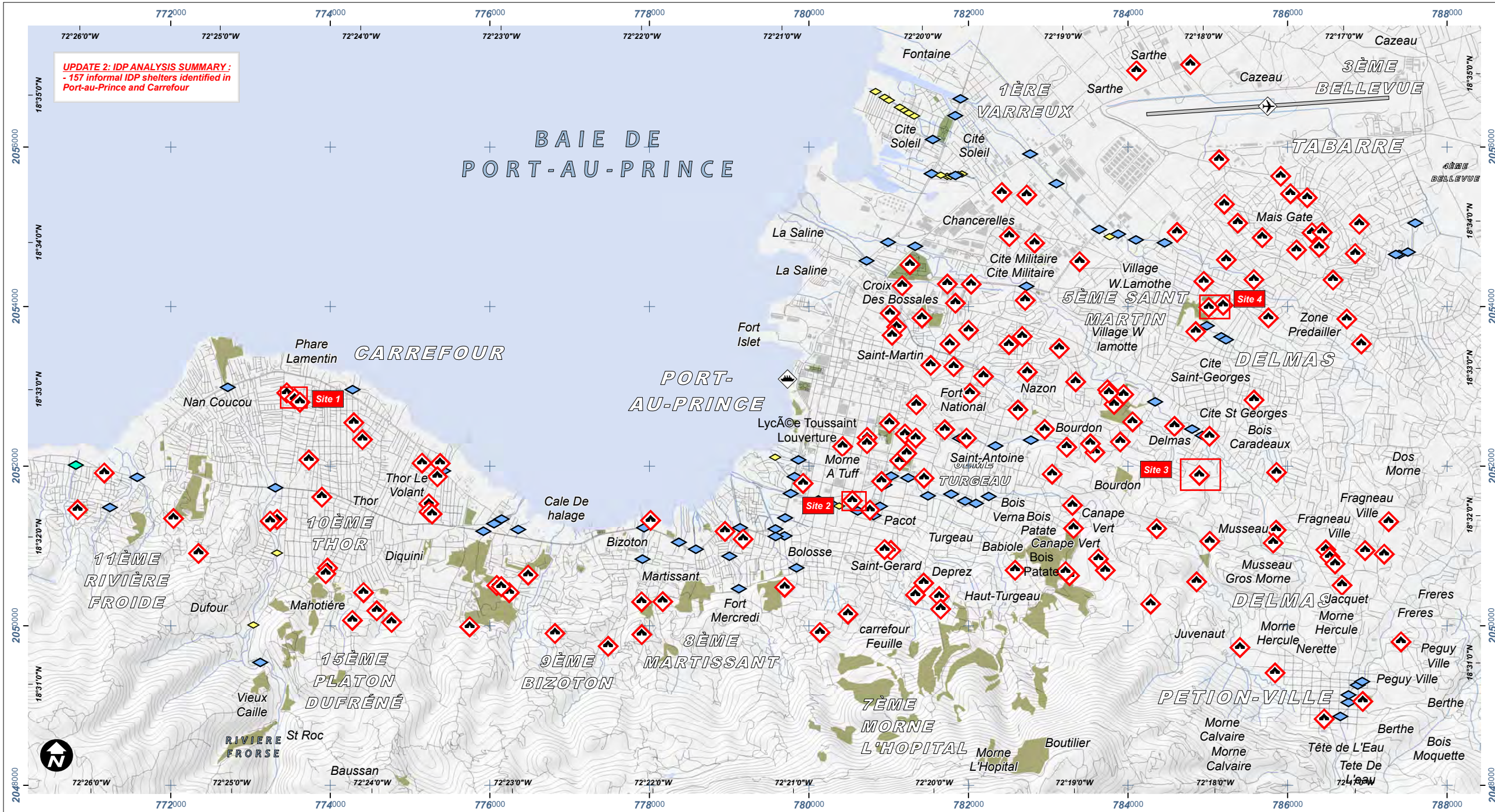


# OVERVIEW OF IDP CONCENTRATIONS IN PORT-AU-PRINCE AND CARREFOUR, HAITI (UPDATE 2)

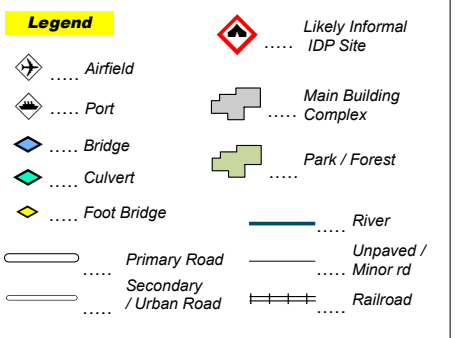
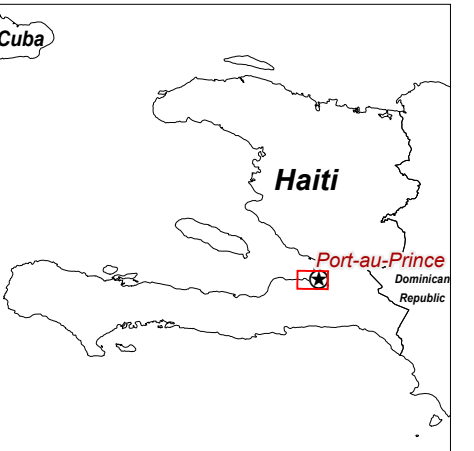
Operational Analysis with GeoEYE-1 Data Acquired 13 January 2010 and QuickBird data acquired 4 March 2008

This map presents an overview of temporary shelter locations of displaced Haitians in Port-au-Prince and Carrefour, as identified in satellite imagery recorded on 13 January 2010. These IDP locations range in size from small clusters of survivors (approx 20-50) to large concentrations numbering in the low thousands. Locations are commonly situated in open areas away from unstable buildings, in parks, sport fields, church compounds and grassy medians of main roads. Four case examples are shown in the imagery. This is a preliminary analysis & has not yet been validated in the field. Please send ground feedback to UNITAR / UNOSAT.

**Earthquake 7.0M**  
**17 January 2010 (21:00:00 UTC)**  
**Version 2.0**  
 Glide No: EQ-2010-000009-HTI



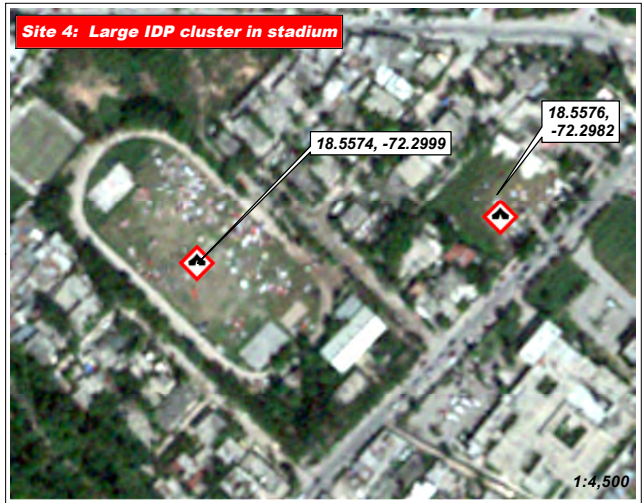
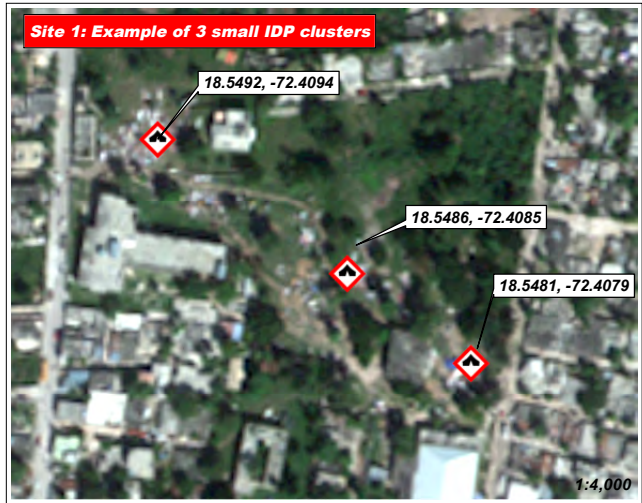
**UPDATE 2: IDP ANALYSIS SUMMARY:**  
 - 157 informal IDP shelters identified in Port-au-Prince and Carrefour



**Map Scale for A3: 1:55,000**  
 UTM grid coordinates given in 2km intervals  
 Elevation contour lines in 20 meter intervals  
 Background satellite imagery GeoEye-1 13 January 2010

0 250 500 1,000 1,500 2,000 2,500 Meters

Satellite Data (1)..... GeoEye-1  
 Imagery Dates ..... 13 January 2010  
 Resolution ..... 50cm  
 Copyright ..... GeoEye 2009  
 Satellite Data (2) ..... QuickBird-2  
 Imagery Date ..... 4 March 2008  
 Copyright ..... DigitalGlobe  
 Source ..... Google Earth  
 Road & Urban Data ..... Open Street Map  
 Place Names ..... Google Map Maker  
 Other Data ..... MINUSTAH, USGS, NGA  
 Elevation Data ..... ASTER GDEM  
 Source ..... METI & NASA 2009  
 Analysis ..... UNITAR / UNOSAT  
 Map Production ..... UNITAR / UNOSAT  
 Projection ..... UTM Zone 18 North  
 Datum ..... WGS-84 (EGM-96)



Map Data © 2009 Google - Improve with Google Map Maker  
 The depiction and use of boundaries, geographic names and related data shown here are not warranted to be error-free nor do they imply official endorsement or acceptance by the United Nations. UNOSAT is a program of the United Nations Institute for Training and Research (UNITAR), providing satellite imagery and related geographic information, research and analysis to UN humanitarian & development agencies & their implementing partners.

**unitar**  
 United Nations Institute for Training and Research  
**UNOSAT**  
 Contact Information: unosat@unitar.org  
 24/7 Hotline: +41 76 487 4998  
 www.unosat.org